



# Villa Aurelia

Nuvem, South Goa  
Possession: February, 2026

ALL IMAGES REPRESENT ARTISTIC OVERVIEW



a home should be more than a  
place to live—it should be a  
place to belong.





## *Built-Up Area & Specifications*

Welcome to Villa Aurelia, a luxury private residence nestled in the serene village of Nuvem, South Goa. Designed for those who seek peace, elegance, and connection with nature, Villa Aurelia blends modern architecture with earthy Goan aesthetics.

- Total Built-up Area: 2500 sq. ft.
- Configuration: Premium 3 BHK Villa with spacious living & dining
- Fully furnished interiors curated by professional designers
- Ground + 1 level structure with balconies and terraces
- Premium flooring, teak windows and door, UPVC
- High ceilings and open-plan layout for natural light & ventilation

# Color Palette

WALLS

TEAK (WINDOWS +  
DOORS)

#EXTERIOR WALLS

FLOORS

#ROOFING TILES

ALL IMAGES REPRESENT ARTISTIC OVERVIEW





# THE GRAND FACADE

“Where your journey begins — a quiet invitation into a space shaped by light, landscape, and emotion. The exterior of Villa Aurelia sets the stage for everything that unfolds within, blending natural textures, curated greenery, and architectural grace to create a sense of arrival that feels both grounding and elevating. Here, the first impression isn’t just seen — it’s felt.”



## VILLA EXTERIOR



ALL IMAGES REPRESENT ARTISTIC OVERVIEW



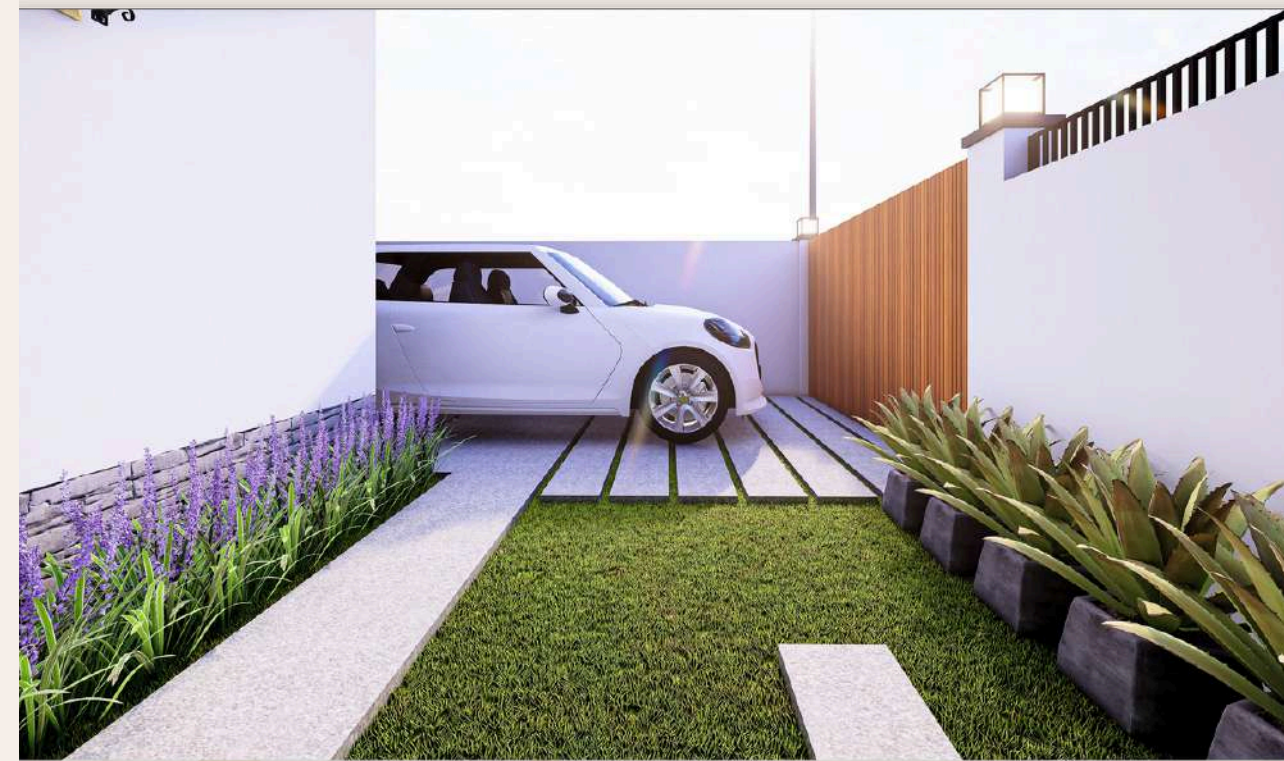


# THE TERRA SANCTUM

“Where nature becomes architecture — a living canvas that frames every view, softens every edge, and turns outdoor spaces into moments of quiet wonder. The landscape of Villa Aurelia is more than ornamentation; it is choreography — of shade and sunlight, pathways and pauses, stillness and movement. Native greens, sculpted contours, and water elements weave together to create an atmosphere that feels rooted in the land yet elevated in experience.



## VILLA EXTERIOR



ALL IMAGES REPRESENT ARTISTIC OVERVIEW





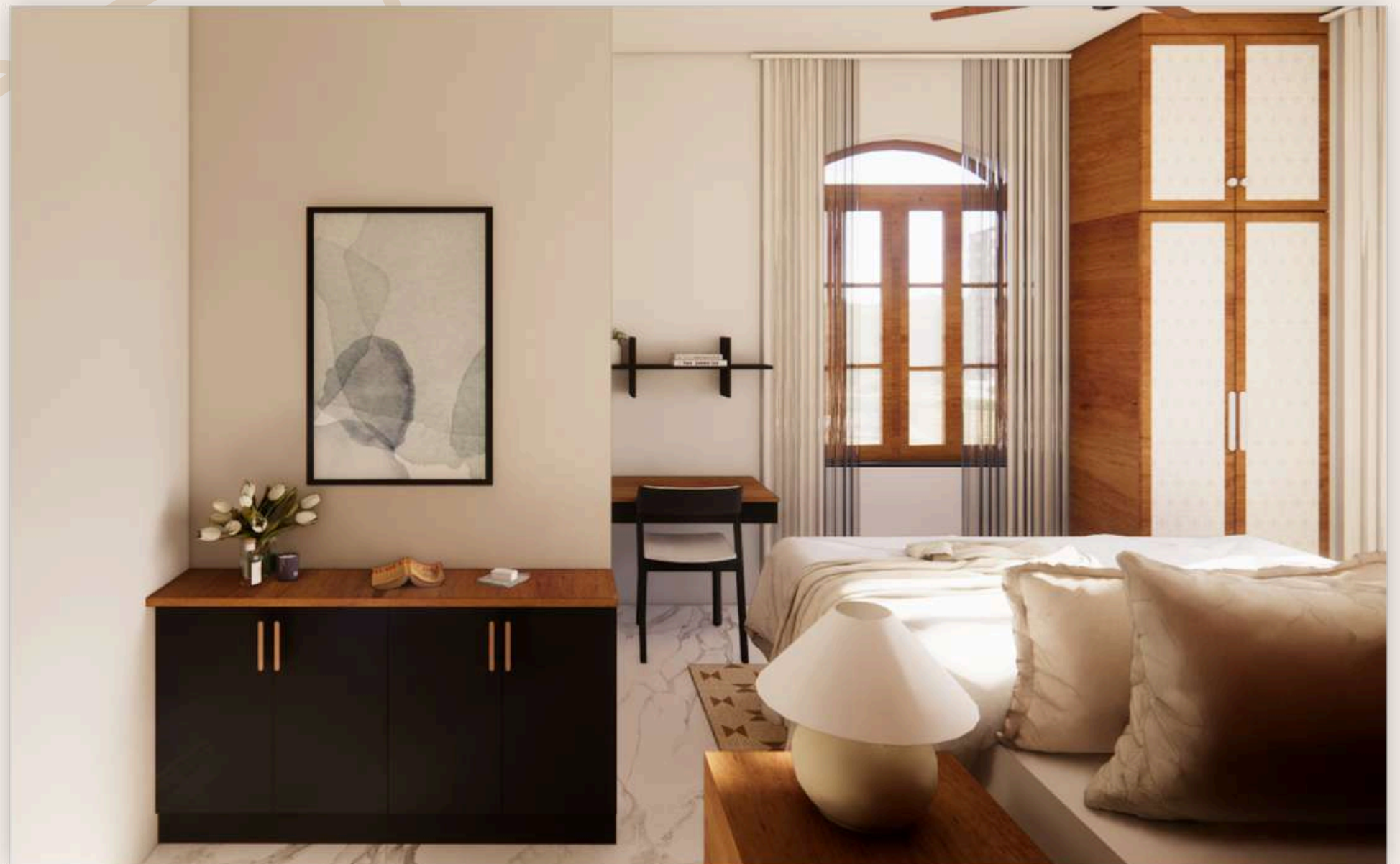
# THE SANCTUARY LEVEL (GROUND FLOOR)

The heart of Villa Aurelia — where natural light, open spaces, and curated interiors create a warm welcome. This level brings together the living room, dining, and kitchen in a seamless flow designed for connection, relaxation, and everyday comfort.

ALL IMAGES REPRESENT ARTISTIC OVERVIEW



## GROUND FLOOR BEDROOM



ALL IMAGES REPRESENT ARTISTIC OVERVIEW



## KITCHEN AND DINING



ALL IMAGES REPRESENT ARTISTIC OVERVIEW



## LIVING ROOM



ALL IMAGES REPRESENT ARTISTIC OVERVIEW





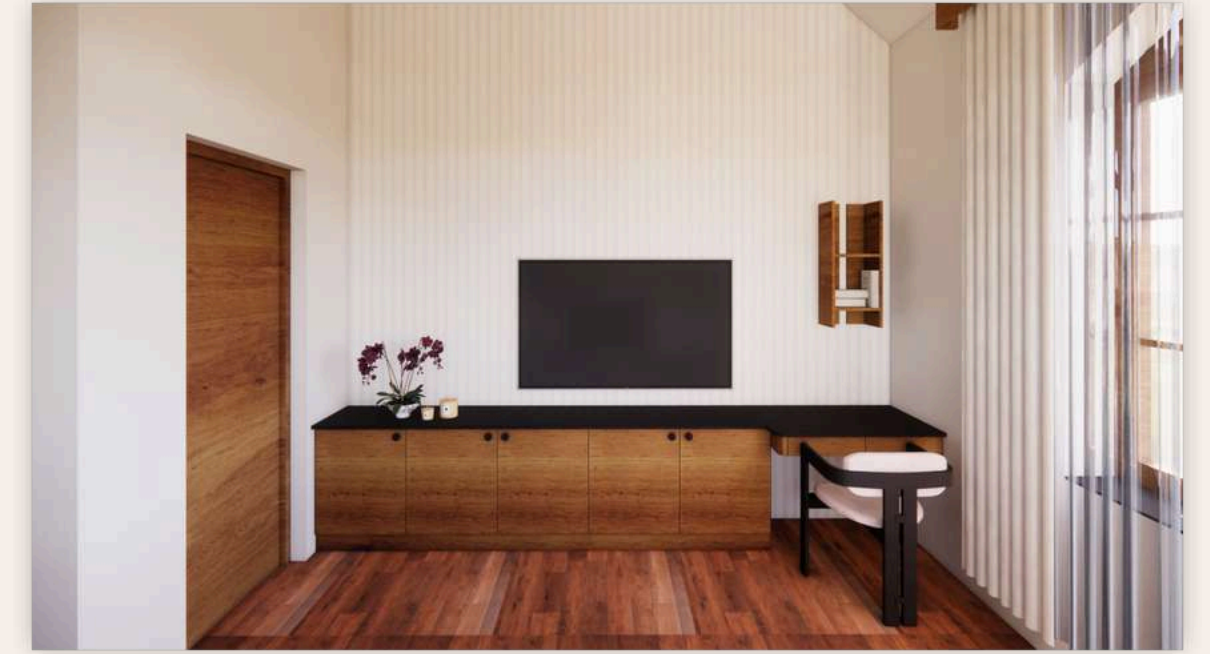
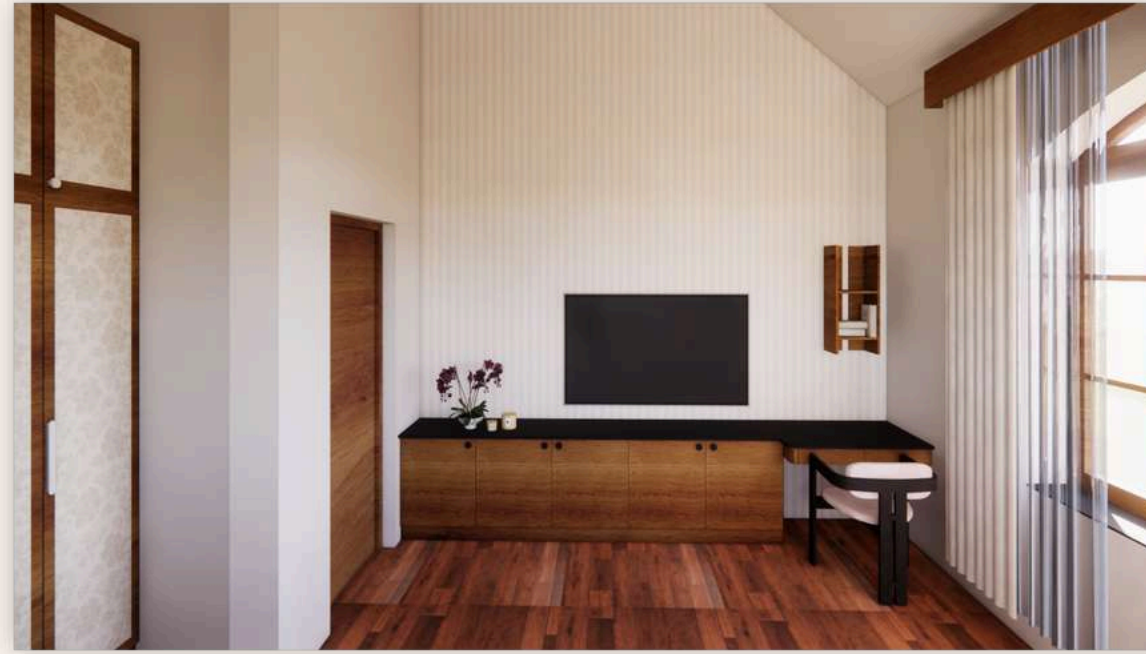
# THE SERENITY SUITES (FIRST FLOOR)

A private escape crafted for rest and rejuvenation. Featuring ensuite bedrooms with balconies that open to green views, soft natural textures, and quiet elegance — a space where mornings are calm and nights are deeply restful.

ALL IMAGES REPRESENT ARTISTIC OVERVIEW



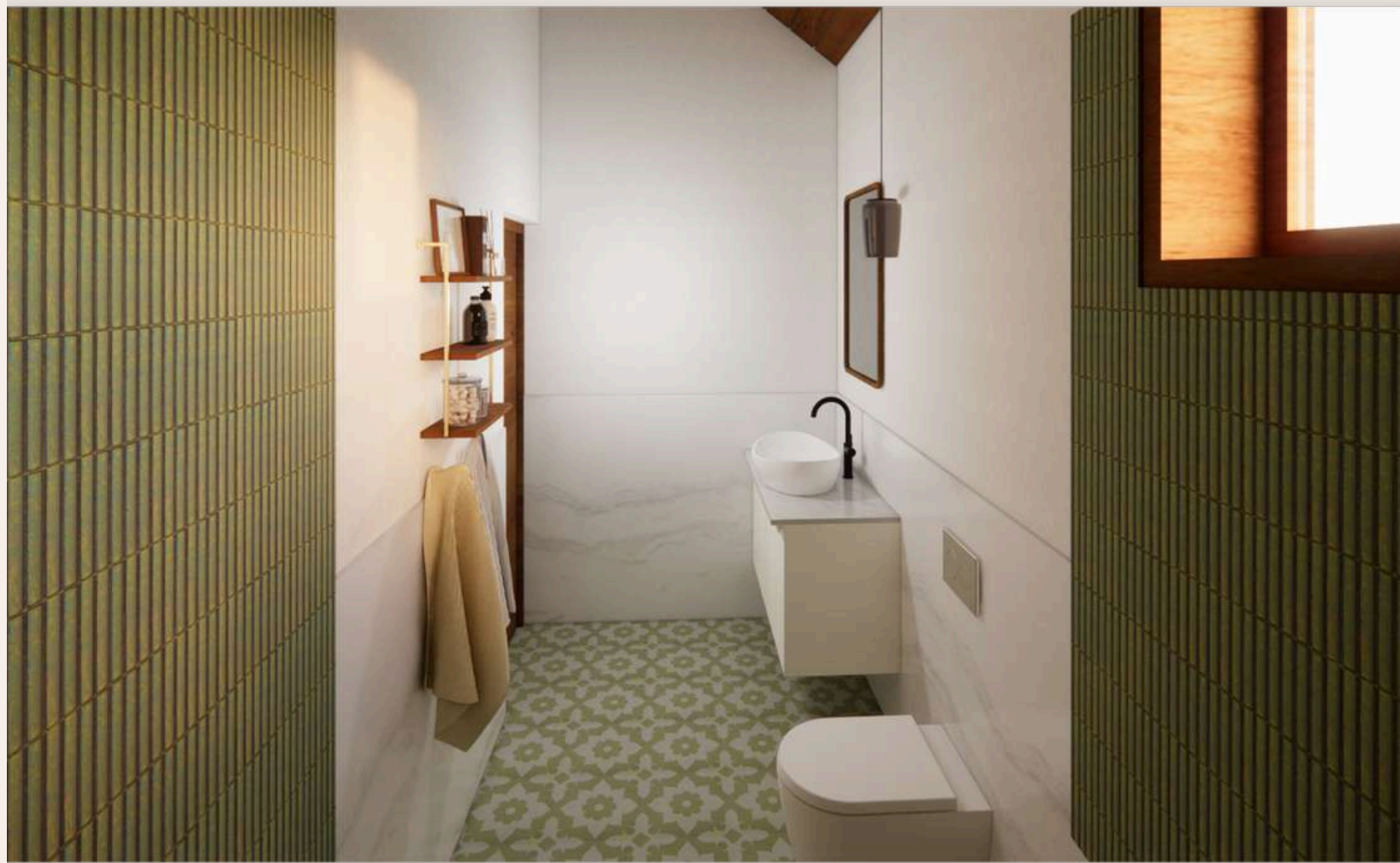
## MASTER BEDROOM



ALL IMAGES REPRESENT ARTISTIC OVERVIEW



## MASTER BATHROOM



ALL IMAGES REPRESENT ARTISTIC OVERVIEW



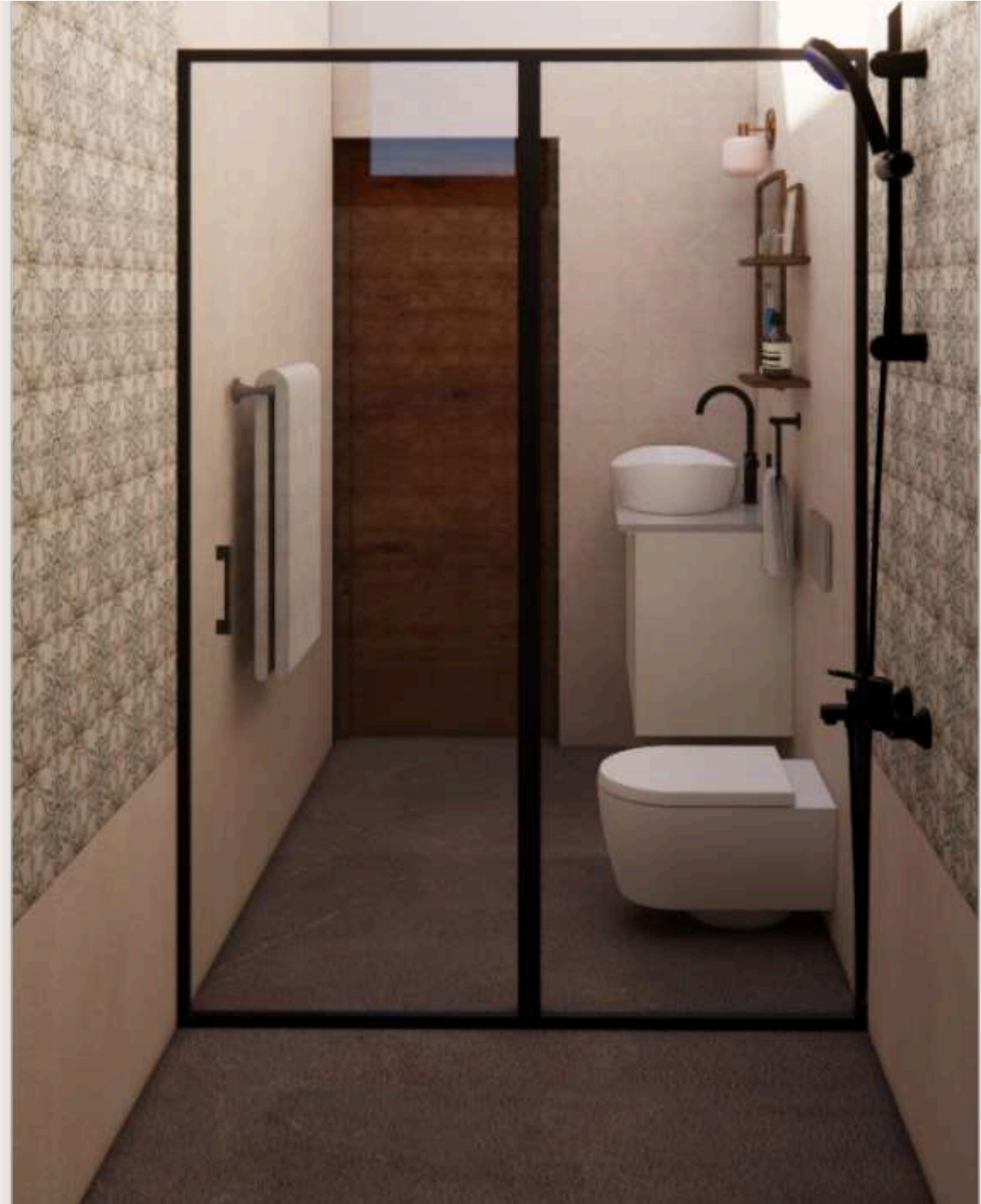
## BEDROOM WITH WINDOW SEATOUT



ALL IMAGES REPRESENT ARTISTIC OVERVIEW



## BATHROOM 3



ALL IMAGES REPRESENT ARTISTIC OVERVIEW



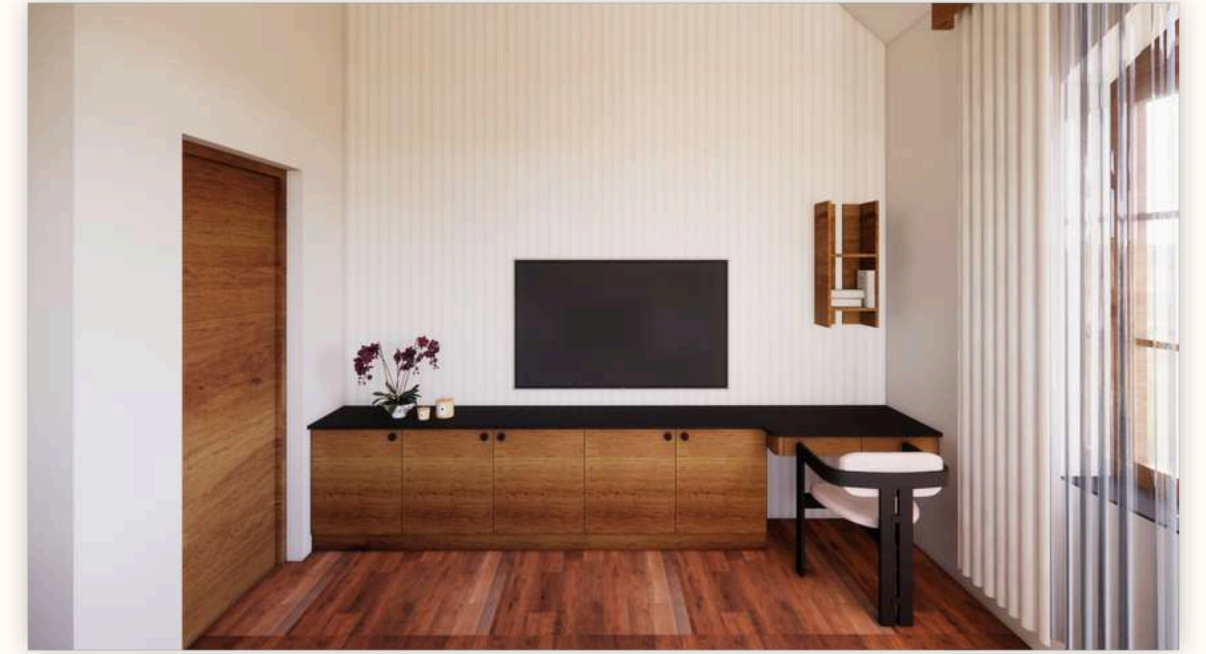


# THE PATHWAY OF LIGHT (STAIRS)

A beautifully designed transition space connecting each level with harmony and fluidity. Thoughtfully crafted with natural light and minimalistic details, symbolizing the journey through Villa Aurelia's vertical living experience.



## STAIRS



ALL IMAGES REPRESENT ARTISTIC OVERVIEW





# Villa Viantha

Nuvem, South Goa  
Possession: February, 2026

ALL IMAGES REPRESENT ARTISTIC OVERVIEW





a home should be more than a  
place to live—it should be a  
place to belong.





## *Built-Up Area & Specifications*

Welcome to Villa Viantha, a luxury private residence nestled in the serene village of Nuvem, South Goa. Designed for those who seek peace, elegance, and connection with nature, Villa Aurelia blends modern architecture with earthy Goan aesthetics.

- Total Built-up Area: 2500 sq. ft.
- Configuration: Premium 3 BHK Villa with spacious living & dining
- Fully furnished interiors curated by professional designers
- Ground + 1 level structure with balconies and terraces
- Premium flooring, teak windows and door, UPVC
- High ceilings and open-plan layout for natural light & ventilation



# Color Palette

WALLS

TEAK (WINDOWS +  
DOORS)

#EXTERIOR WALLS

FLOORS

#ROOFING TILES

ALL IMAGES REPRESENT ARTISTIC OVERVIEW





# THE GRAND FACADE

“Where your journey begins — a quiet invitation into a space shaped by light, landscape, and emotion. The exterior of Villa Viantha sets the stage for everything that unfolds within, blending natural textures, curated greenery, and architectural grace to create a sense of arrival that feels both grounding and elevating. Here, the first impression isn’t just seen — it’s felt.”



## VILLA EXTERIOR



ALL IMAGES REPRESENT ARTISTIC OVERVIEW





# THE SANCTUARY LEVEL (GROUND FLOOR)

The heart of Villa Viantha— where natural light, open spaces, and curated interiors create a warm welcome. This level brings together the living room, dining, and kitchen in a seamless flow designed for connection, relaxation, and everyday comfort.

ALL IMAGES REPRESENT ARTISTIC OVERVIEW



## GROUND FLOOR BEDROOM



ALL IMAGES REPRESENT ARTISTIC OVERVIEW



## KITCHEN AND DINING



ALL IMAGES REPRESENT ARTISTIC OVERVIEW



## LIVING ROOM



ALL IMAGES REPRESENT ARTISTIC OVERVIEW





# THE SERENITY SUITES (FIRST FLOOR)

A private escape crafted for rest and rejuvenation.  
Featuring ensuite bedrooms with balconies that open to  
green views, soft natural textures, and quiet elegance — a  
space where mornings are calm and nights are deeply  
restful.



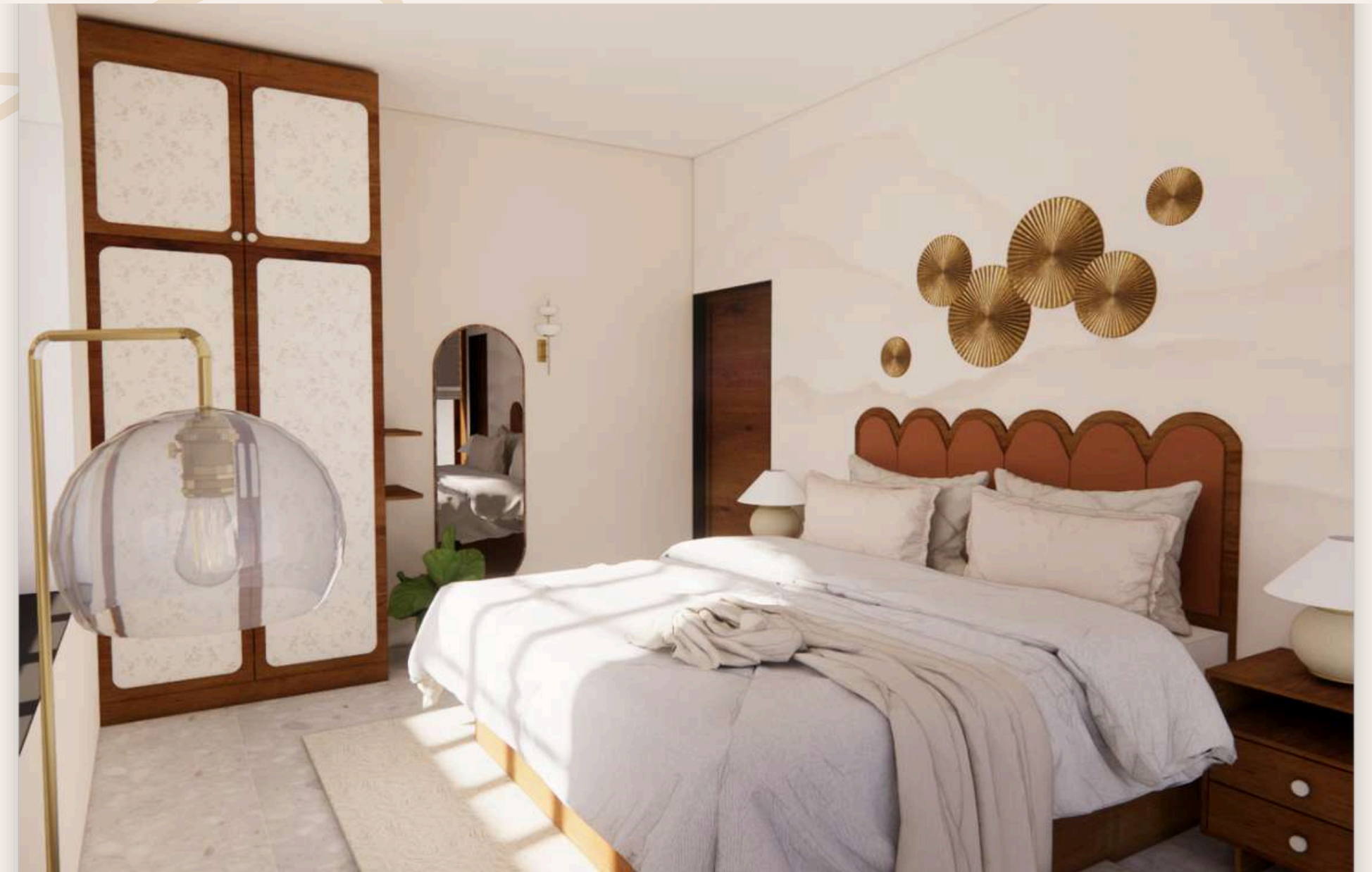
MASTER BEDROOM



ALL IMAGES REPRESENT ARTISTIC OVERVIEW



## BEDROOM WITH WINDOW SEATOUT



ALL IMAGES REPRESENT ARTISTIC OVERVIEW